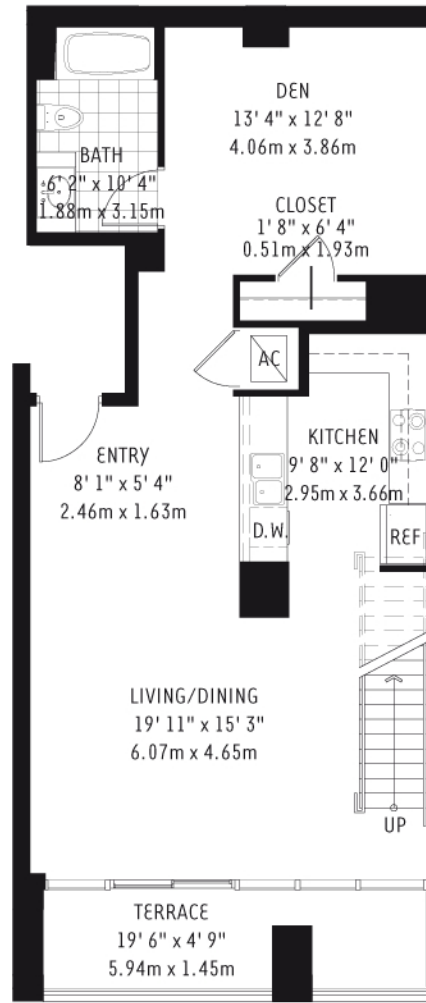


# THE MIDRISE AT 4 MIDTOWN - UNIT L 2

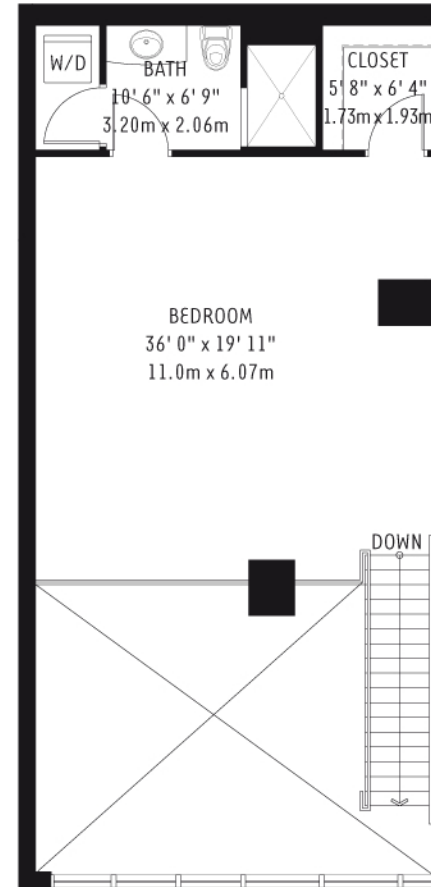


4 Midtown

Lower



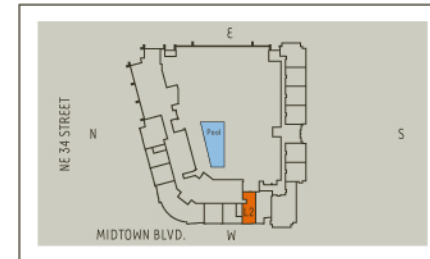
Upper



## The Midrise at 4 Midtown Unit L 2 (M0301)

1 Bedroom / Den / 2 Bath

Lower	870 sq. ft.	81 m <sup>2</sup>
Upper	946 sq. ft.	88 m <sup>2</sup>
<b>Residence Total</b>	<b>1816 sq. ft.</b>	<b>169 m<sup>2</sup></b>
<b>Terrace</b>	<b>116 sq. ft.</b>	<b>11 m<sup>2</sup></b>
<b>TOTAL</b>	<b>1932 sq. ft.</b>	<b>180 m<sup>2</sup></b>



There are various methods for calculating the square footage of a condominium unit and depending upon the method of calculation, the quoted square footage of a condominium unit may vary. The square footages of the Unit shown herein are based upon the "Architectural Method" of measurement and stated dimensions are measured to the exterior boundaries of the exterior walls and the centerline of interior demising walls and in fact vary from the dimensions that would be determined by using the description and boundaries of the Unit set forth in the Declaration (which only includes the interior airspace between the perimeter walls and excludes interior structural components). Accordingly, the square footages stated herein are greater than those which would be derived by measuring only the interior area space for the Unit as the Unit is described in the Declaration. Seller does not make, and specifically disclaims, any representation or warranty as to the actual size, dimensions or square footage of the Unit. Purchaser should refer to the description and boundaries of the Unit set forth in the recorded Declaration and make its own determination as to the area and dimensions of the Unit. These drawings are conceptual only and are for the convenience of reference.

ORAL REPRESENTATIONS CANNOT BE RELIED UPON AS CORRECTLY STATING REPRESENTATIONS OF THE DEVELOPER. FOR CORRECT REPRESENTATIONS, MAKE REFERENCE TO THIS BROCHURE AND TO THE DOCUMENTS REQUIRED BY SECTION 718.503, FLORIDA STATUTES, TO BE FURNISHED BY A DEVELOPER TO A BUYER OR LESSEE.