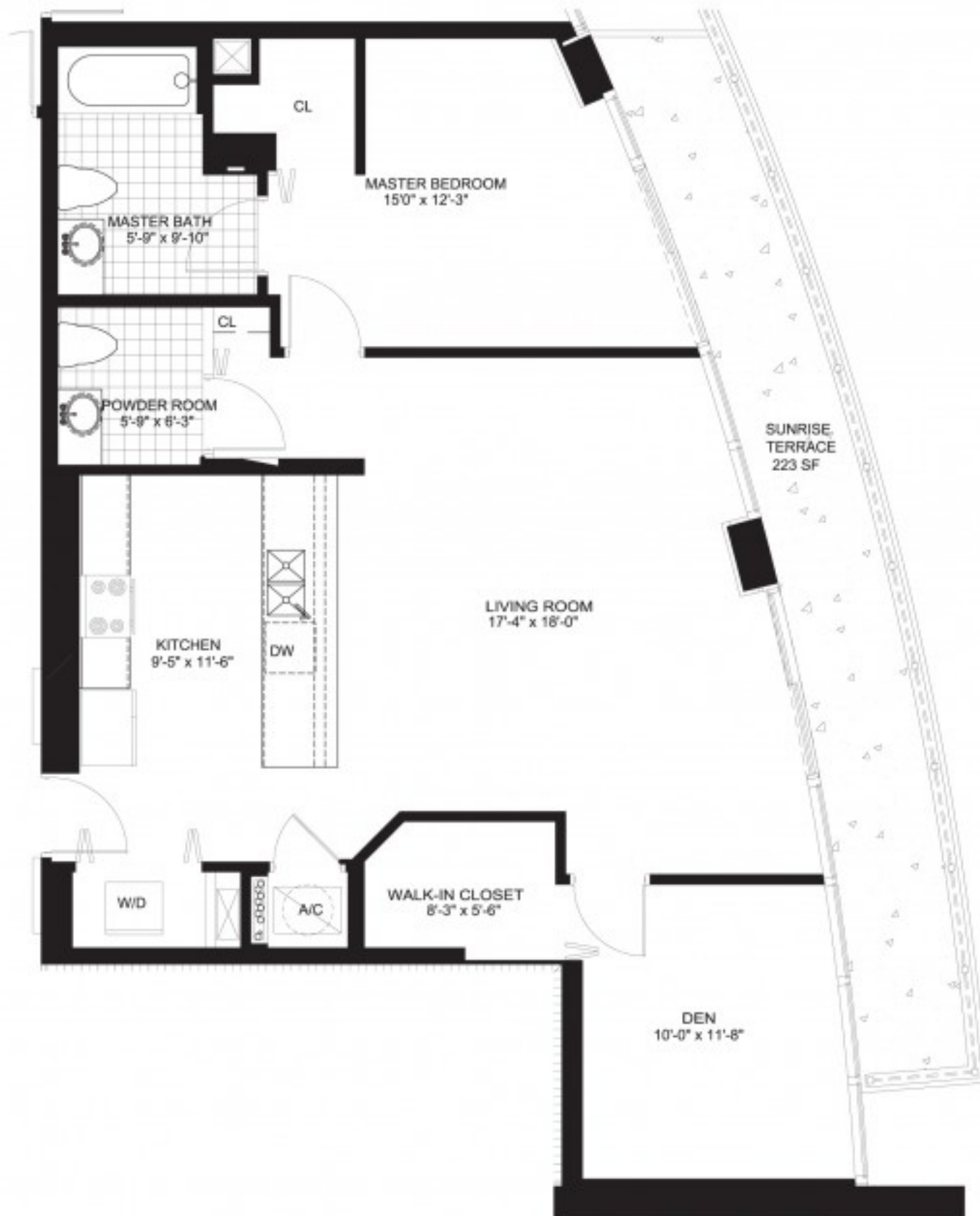




# 1A (605)

1 BEDROOM, DEN, 1.5 BATH

LIVING AREA	1153 SQ. FT.
TERRACE	223 SQ. FT.
TOTAL LIVING AREA	1376 SQ. FT.



We are pledged to the letter and spirit of the U.S. policy for the achievement of equal housing opportunity throughout the Nation. We encourage and support an affirmative advertising and marketing program in which there are no barriers to obtaining housing because of race, color, religion, sex, handicap, familial status or national origin. ORAL REPRESENTATIONS CANNOT BE RELIED UPON AS CORRECTLY STATING REPRESENTATIONS OF THE SELLER. FOR CORRECT REPRESENTATIONS MAKE REFERENCE TO THIS BROCHURE AND TO THE DOCUMENTS REQUIRED BY SECTION 718.503, FLORIDA STATUTES, TO BE FURNISHED BY A SELLER TO A BUYER. AREAS AND DIMENSIONS SHOWN HERE ARE PER ARCHITECTURAL MEASUREMENT PRACTICE WHICH YIELD RESULTS WHICH DIFFER FROM THE ENGINEERING MEASUREMENT PRACTICE AND THEREFORE, MAY DIFFER FROM "AS BUILT" MEASUREMENTS FOR CONDOMINIUM DOCUMENT PURPOSES. The sketches, renderings, graphic materials, plans, specifications, terms, conditions and statements contained in this brochure are proposed only, and the Seller reserves the right to modify, revise or withdraw any or all of same in its sole discretion and without prior notice. These drawings are conceptual only and are for the convenience of reference. They should not be relied upon as representations, express or implied. Dimensions and square footage are approximate and may vary with actual construction.