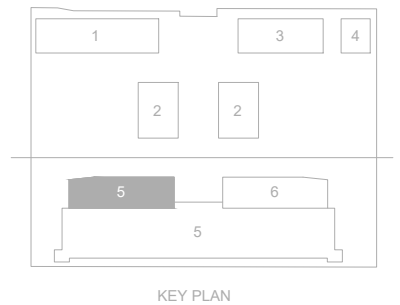
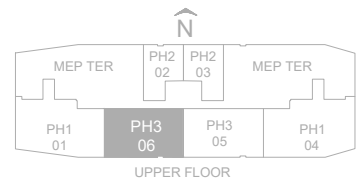
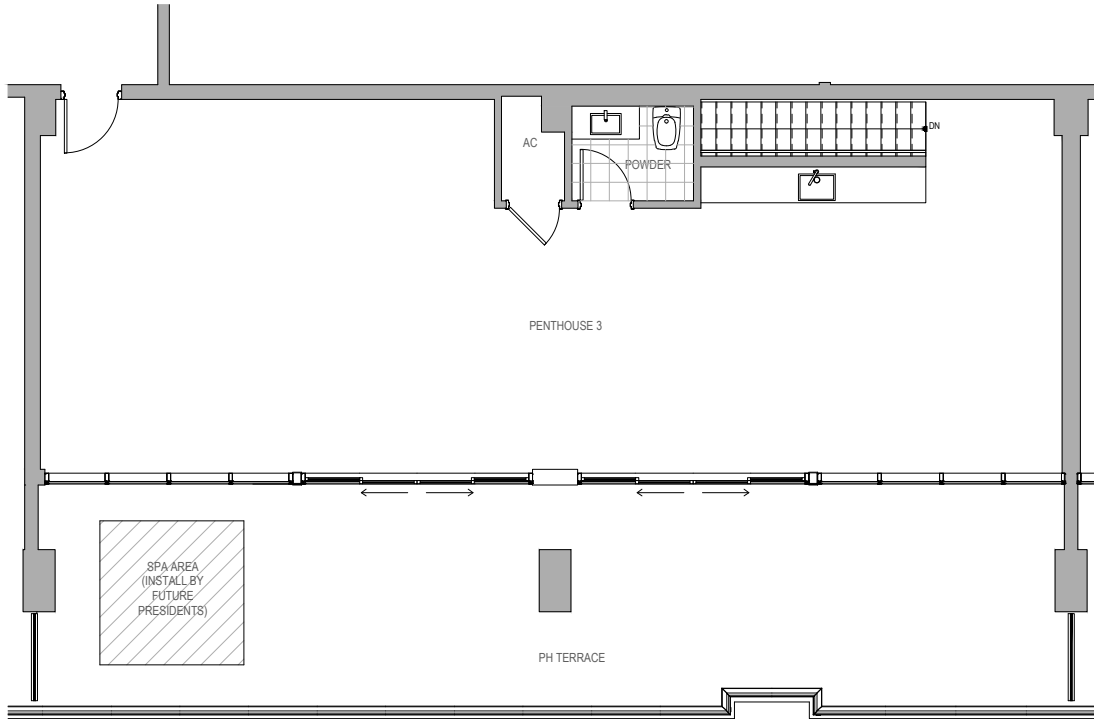


UNIT PH3

3 BEDROOM / 3.5 BATHS

INDOOR LIVING AREA 2044 sq ft 189.89 sq m
 OUTDOOR LIVING AREA 426 sq ft 39.58 sq m

KEY PLAN



UNIT PH3 UPPER FLOOR

LIVING ROOM / 1/5 BATHS

INDOOR LIVING AREA 1283 sq ft 119.19 sq m
 OUTDOOR LIVING AREA 754 sq ft 70.05 sq m