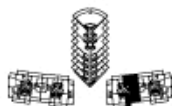
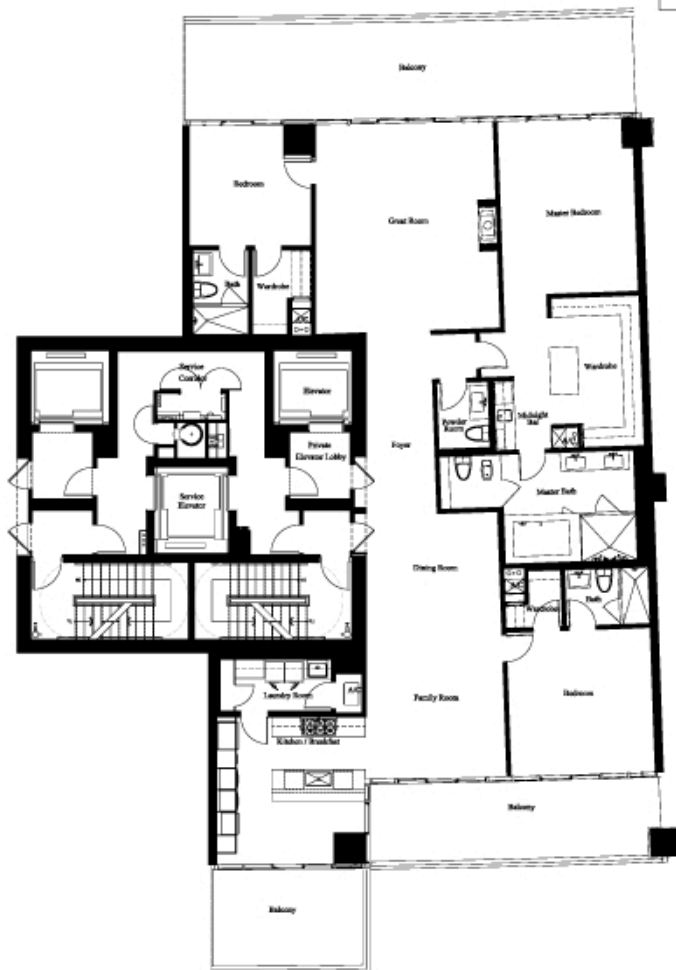


ATLANTIC OCEAN


 COLLING AVENUE  
**KEY PLAN**  
 N.T.S.


**SOUTH TOWER (Levels 04-11)**  
**UNIT 'C' MOD**  
**3 BEDROOMS AND 3 1/2 BATHS**

A/C	3,133 SQ FT	291.1 M <sup>2</sup>
BALCONY	1,008 SQ FT	93.6 M <sup>2</sup>
TOTAL	4,141 SQ FT	384.7 M <sup>2</sup>



Stated dimensions are measured to the exterior boundaries of the exterior walls, the centerline of interior dividing walls between units, and the outer boundary of exterior dividing walls adjacent to exterior elevations, and is not vary from the dimensions that would be determined by using the description and definition of the "Unit" set forth in the Declaration which generally only includes the interior dimensions between the perimeter walls and excludes major structural components. All dimensions are approximate, and all floor plans and development plans are subject to change. The drawings, renderings, graphics, materials, plans, specifications, terms, conditions and obligations contained in this brochure are prepared and interpreted only and its use and not necessarily subject to the floor plans and specifications for the development. Further, Developer reserves the right to modify, revise or withdraw any or all the same in its sole discretion and without prior notice.