

# MAJOR.

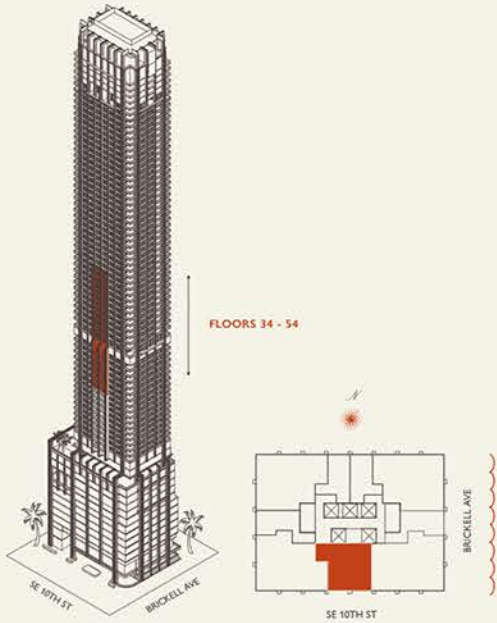
888 Brickell Avenue

MIAMI FLORIDA

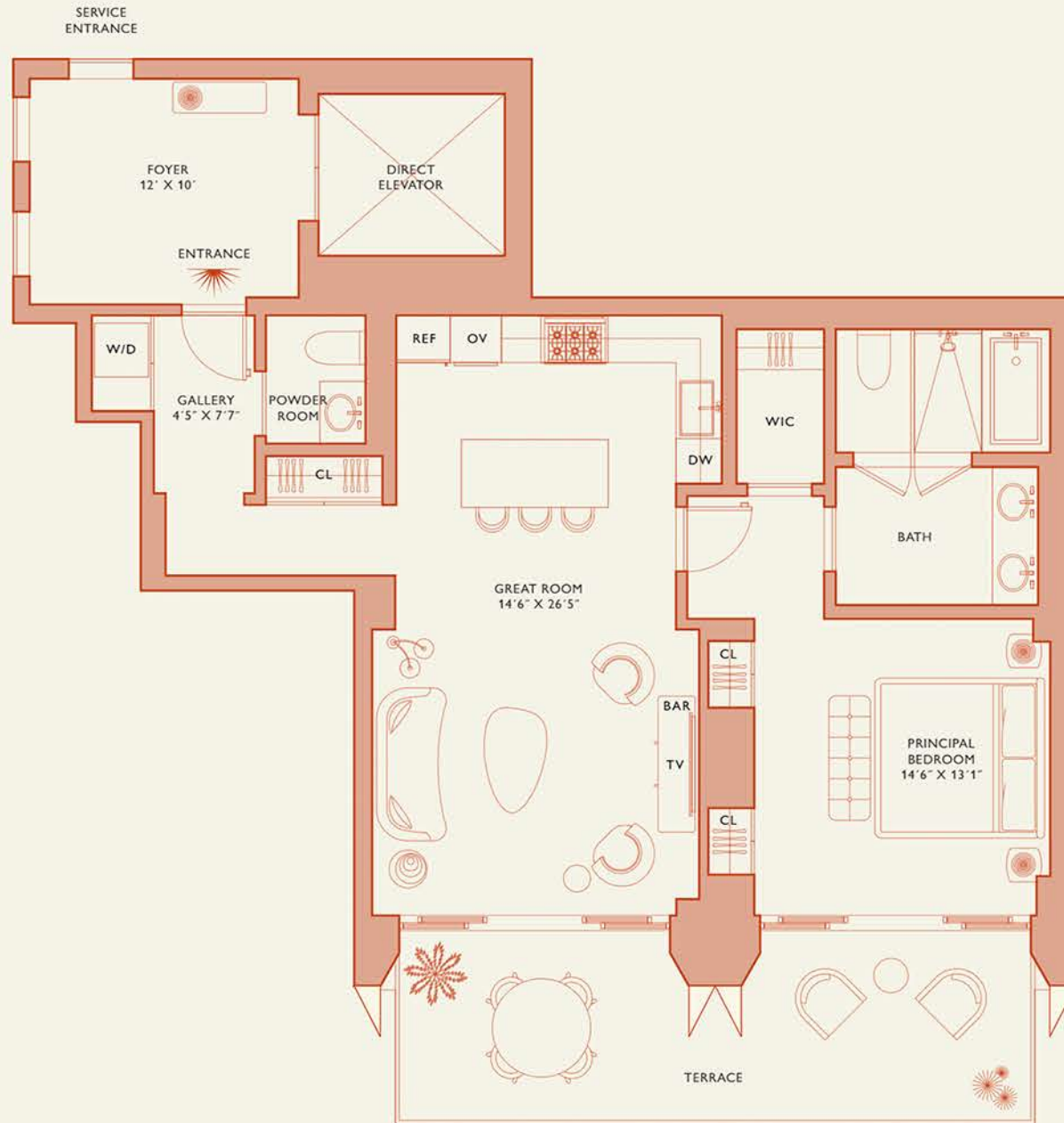
## Residence C

FLOOR 34-54

Rooms	Square Footages	Features
Bedroom	Indoor: 1,050 SQF	Furniture by Studio Sofield
Bathroom	Outdoor: 235 SQF	11' Ceiling Height
Powder Room	Total: 1,285 SQF	Terrace
		Views: South



Stated dimensions are measured to the exterior boundaries of the exterior walls and the centerline of interior demising walls and in fact vary from the dimensions that would be determined by using the description and definition of the "Unit" set forth in the Declaration (which generally only includes the interior airspace between the perimeter walls and excludes interior structural components). For your reference, the area of the Unit, determined in accordance with those defined unit boundaries, is set forth on Exhibit "3" to the Declaration of Condominium. Note that measurements of rooms set forth on this floor plan are generally taken at the greatest points of each given room (as if the room were a perfect rectangle), without regard for any cutouts. Accordingly, the area of the actual room will typically be smaller than the product obtained by multiplying the stated length times width. All dimensions are approximate and may vary with actual construction, and all floor plans and development plans are subject to change.



Biscayne Bay

Major Residence

