

INTRACOASTAL

Residence 101-I

4 Bedroom | 5.5 Bathroom

UNIT	5,661 SF
LANAI + POOL	4,354 SF
GARAGE	621 SF
TOTAL	10,636 SF

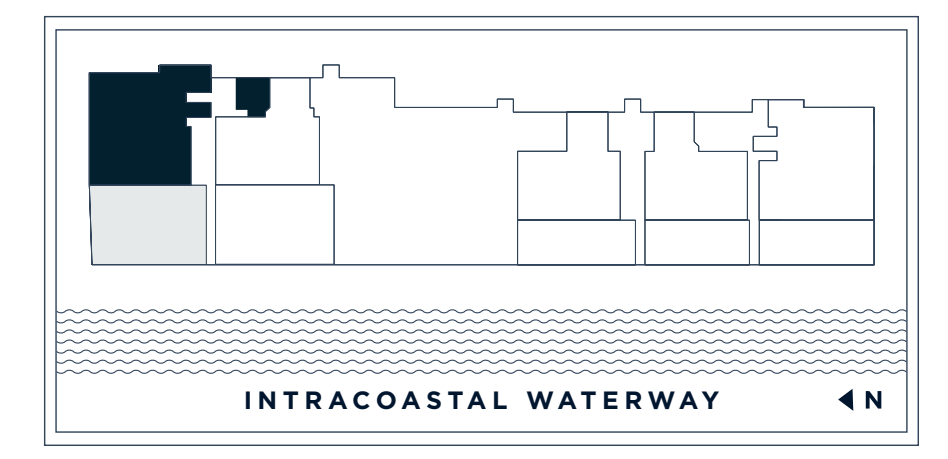
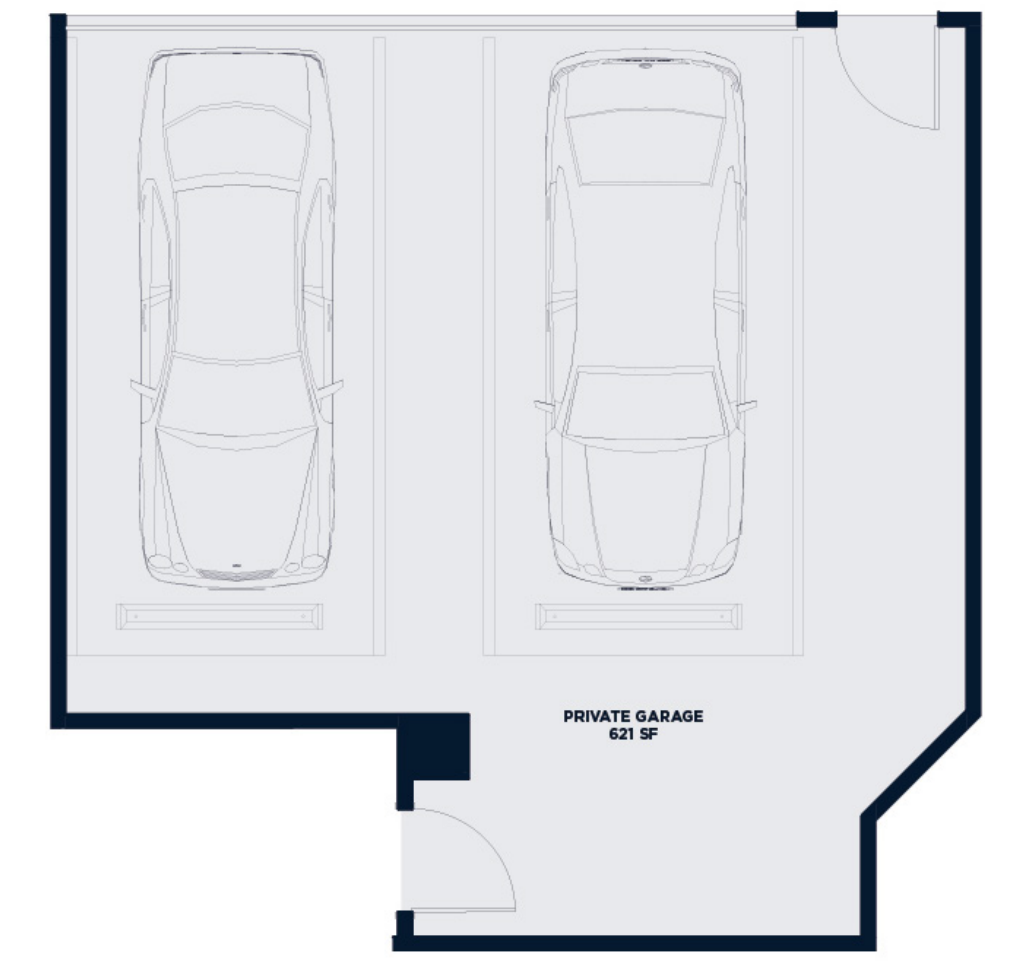
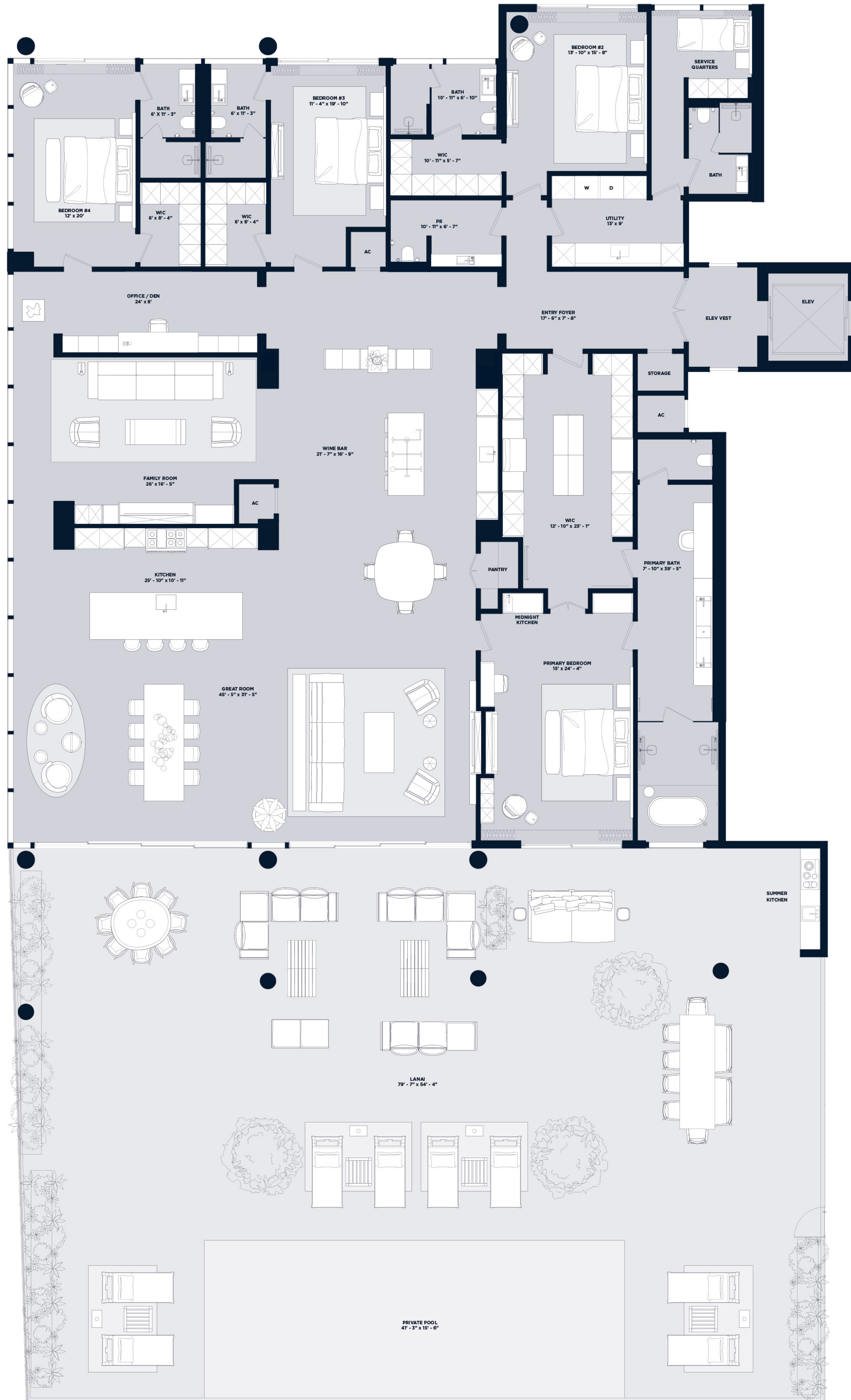
Intimate Waterfront Living

A Rosewood Residence

DEVELOPERS
The Related Group & Dezer Development

ARCHITECT
Arquitectonica

INTERIOR DESIGNER
Studio Piet Boon



RELATED DEZER ARCHITECTONICA

The dimensions stated for this floor plan are approximate because there are various recognized methods for measuring the square footage of a unit. The square footage stated herein is calculated from the exterior boundaries of the exterior walls to the centerline of interior openings with no deductions for closets, curves, or architectural features. This method generally results in a stated dimension greater than the dimension that would be determined by using other accepted methods. The definition of "unit" and the calculation method to be relied upon is set forth by the Developer in Developer's prospectus, which method may result in a square footage calculation less than the result of the calculation method used herein. Renderings depict features not included with purchase, but which are available at an additional cost such as wine bar and closet, not shown among others. Consult the Developer's prospectus to learn what is included with Unit purchase and to understand Unit dimensions. © 2023 HILLBORO REAL ESTATE COMPANY, LLC. All rights reserved.