

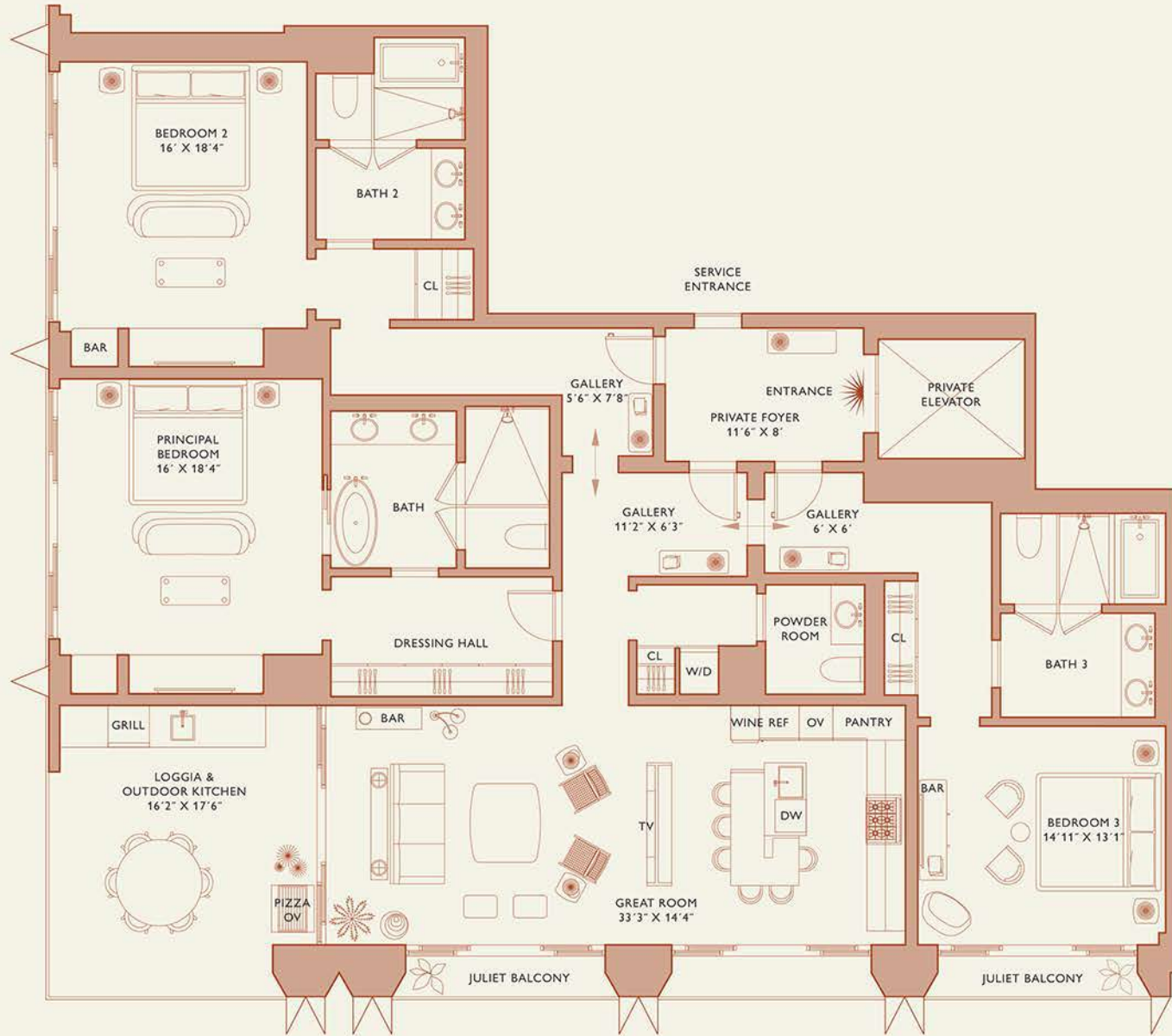
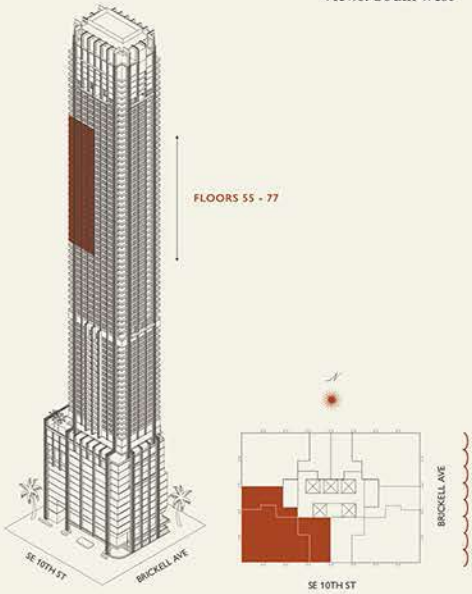
888 Brickell Avenue

MIAMI FLORIDA

Residence D

FLOOR 55-77

Rooms	Square Footages	Features
3 Bedrooms	Indoor: 2,660 SQF	888 Suite & 888 Rooms
3 Bathrooms	Outdoor: 385 SQF	Furniture by Studio Sofield
Powder Room	Total: 3,045 SQF	11' Ceiling Height
		3 Juliet Balconies
		Loggia & Outdoor Kitchen
		Views: South West



Biscayne Bay

Stated dimensions are measured to the exterior boundaries of the exterior walls and the centerline of interior demising walls and in fact vary from the dimensions that would be determined by using the description and definition of the "Unit" set forth in the Declaration (which generally only includes the interior airspace between the perimeter walls and excludes interior structural components). For your reference, the area of the Unit, determined in accordance with those defined unit boundaries, is set forth on Exhibit "3" to the Declaration of Condominium. Note that measurements of rooms set forth on this floor plan are generally taken at the greatest points of each given room (as if the room were a perfect rectangle), without regard for any cutouts. Accordingly, the area of the actual room will typically be smaller than the product obtained by multiplying the stated length times width. All dimensions are approximate and may vary with actual construction, and all floor plans and development plans are subject to change.

888 Residence



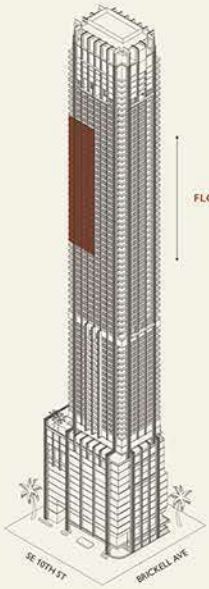
888 Brickell Avenue

MIAMI FLORIDA

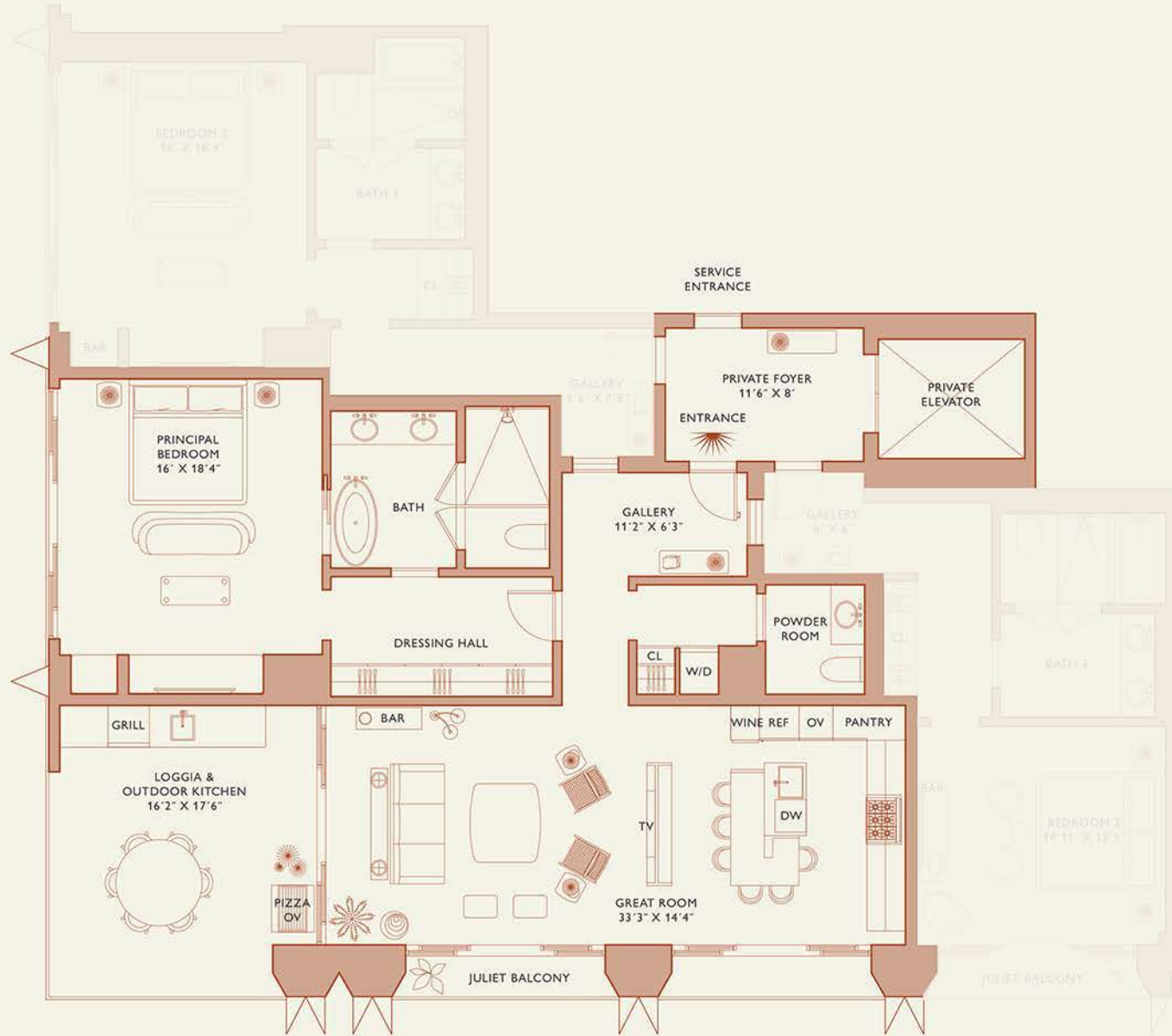
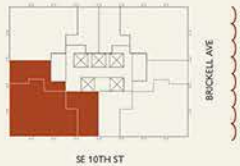
Residence D

FLOOR 55-77

Rooms	Square Footages	Features
3 Bedrooms	Indoor: 2,660 SQF	888 Suite & 888 Rooms
3 Bathrooms	Outdoor: 385 SQF	Furniture by Studio Sofield
Powder Room	Total: 3,045 SQF	11' Ceiling Height
		3 Juliet Balconies
		Loggia & Outdoor Kitchen
		Views: South West



FLOORS 55 - 77

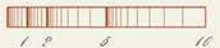


Biscayne Bay

Stated dimensions are measured to the exterior boundaries of the exterior walls and the centerline of interior demising walls and in fact vary from the dimensions that would be determined by using the description and definition of the "Unit" set forth in the Declaration (which generally only includes the interior airspace between the perimeter walls and excludes interior structural components). For your reference, the area of the Unit, determined in accordance with those defined unit boundaries, is set forth on Exhibit "3" to the Declaration of Condominium. Note that measurements of rooms set forth on this floor plan are generally taken as the greatest points of each given room (as if the room were a perfect rectangle), without regard for any cutouts. Accordingly, the area of the actual room will typically be smaller than the product obtained by multiplying the stated length times width. All dimensions are approximate and may vary with actual construction, and all floor plans and development plans are subject to change.

888 Suite

3/38' Scale



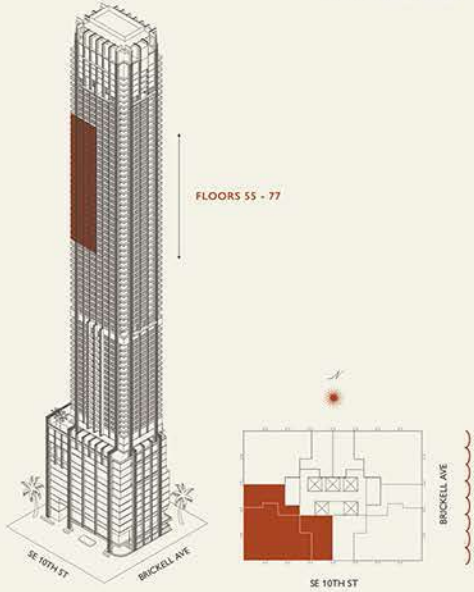
888 Brickell Avenue

MIAMI FLORIDA

Residence D

FLOOR 55-77

Rooms	Square Footages	Features
3 Bedrooms	Indoor: 2,660 SQF	888 Suite & 888 Rooms
3 Bathrooms	Outdoor: 385 SQF	Furniture by Studio Sofield
Powder Room	Total: 3,045 SQF	11' Ceiling Height
		3 Juliet Balconies
		Loggia & Outdoor Kitchen
		Views: South West

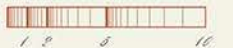


Biscayne Bay

Stated dimensions are measured to the exterior boundaries of the exterior walls and the centerline of interior demising walls and in fact vary from the dimensions that would be determined by using the description and definition of the "Unit" set forth in the Declaration (which generally only includes the interior airspace between the perimeter walls and excludes interior structural components). For your reference, the area of the Unit, determined in accordance with those defined unit boundaries, is set forth on Exhibit "3" to the Declaration of Condominium. Note that measurements of rooms set forth on this floor plan are generally taken at the greatest points of each given room (as if the room were a perfect rectangle), without regard for any cutouts. Accordingly, the area of the actual room will typically be smaller than the product obtained by multiplying the stated length times width. All dimensions are approximate and may vary with actual construction, and all floor plans and development plans are subject to change.

888 Room 1

3/30 Scale



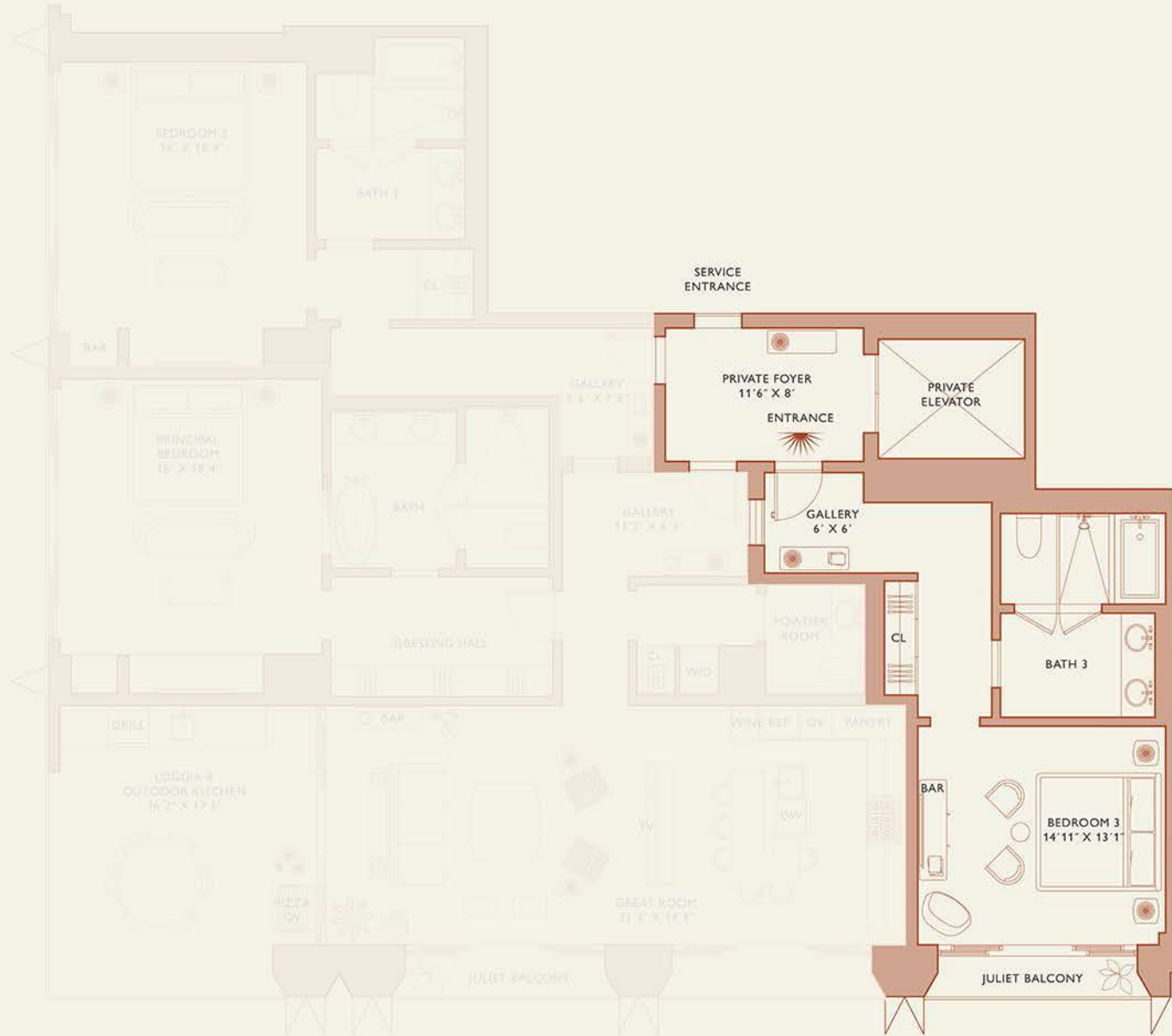
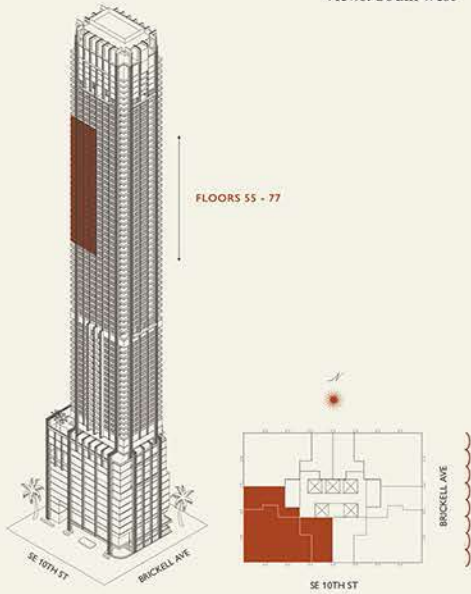
888 Brickell Avenue

MIAMI FLORIDA

Residence D

FLOOR 55-77

Rooms	Square Footages	Features
3 Bedrooms	Indoor: 2,660 SQF	888 Suite & 888 Rooms
3 Bathrooms	Outdoor: 385 SQF	Furniture by Studio Sofield
Powder Room	Total: 3,045 SQF	11' Ceiling Height
		3 Juliet Balconies
		Loggia & Outdoor Kitchen
		Views: South West



Biscayne Bay

Stated dimensions are measured to the exterior boundaries of the exterior walls and the centerline of interior demising walls and in fact vary from the dimensions that would be determined by using the description and definition of the "Unit" set forth in the Declaration (which generally only includes the interior airspace between the perimeter walls and excludes interior structural components). For your reference, the area of the Unit, determined in accordance with those defined unit boundaries, is set forth on Exhibit "3" to the Declaration of Condominium. Note that measurements of rooms set forth on this floor plan are generally taken as the greatest points of each given room (as if the room were a perfect rectangle), without regard for any cutouts. Accordingly, the area of the actual room will typically be smaller than the product obtained by multiplying the stated length times width. All dimensions are approximate and may vary with actual construction, and all floor plans and development plans are subject to change.

888 Room 2

