

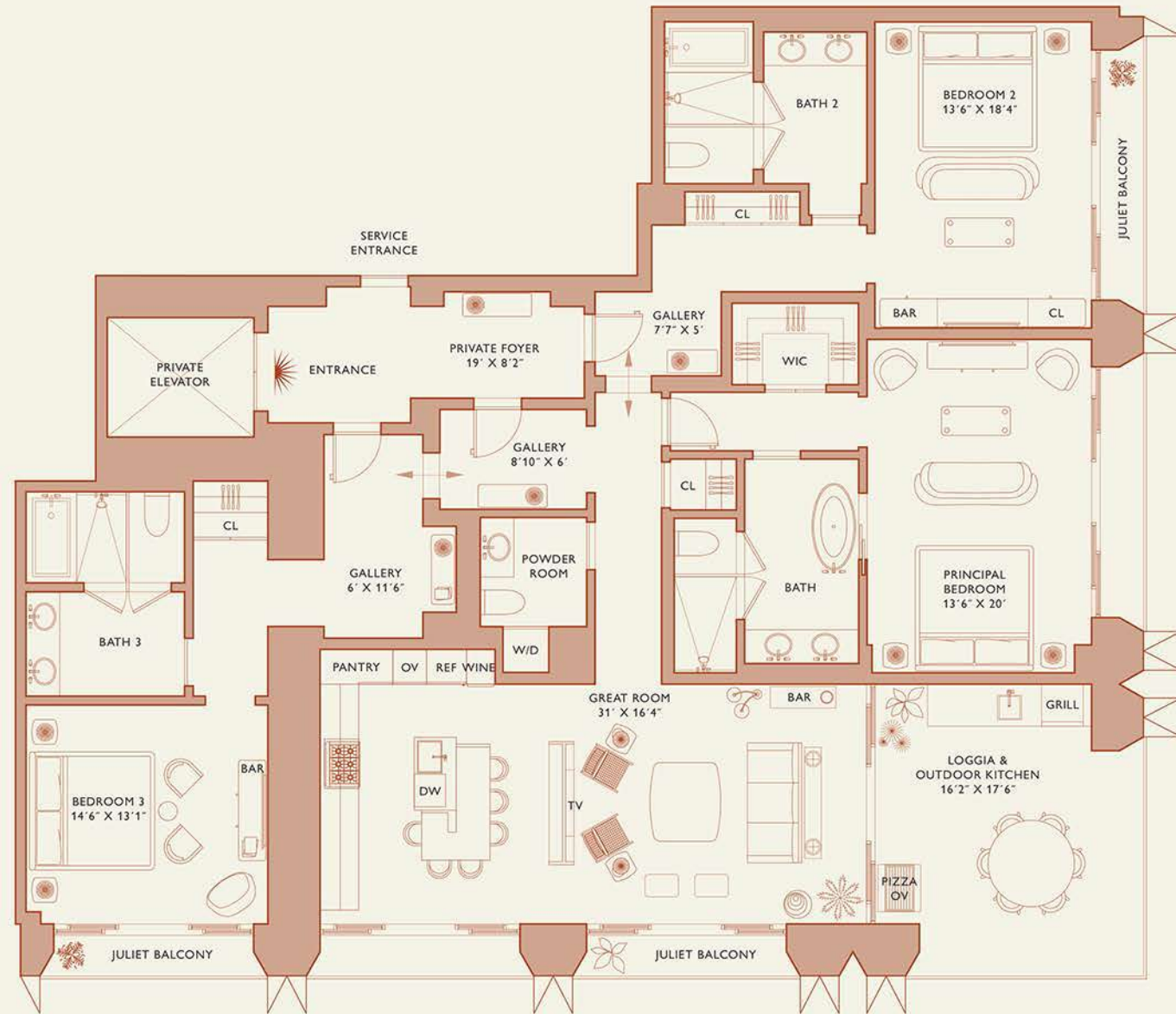
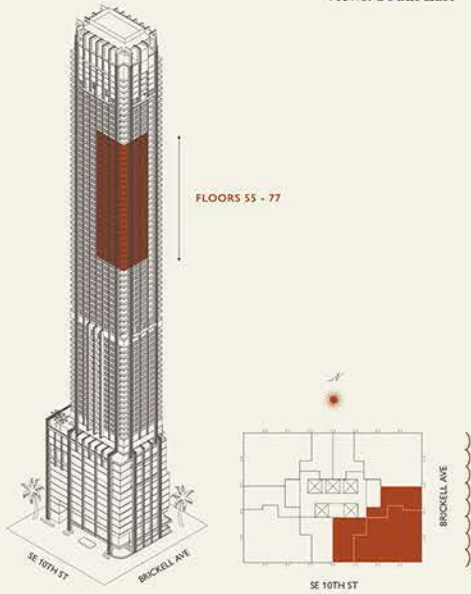
# 888 Brickell Avenue

MIAMI FLORIDA

## Residence A

FLOOR 55-77

Rooms	Square Footages	Features
3 Bedrooms	Indoor: 2,875 SQF	888 Suite & 888 Rooms
3 Bathrooms	Outdoor: 435 SQF	Furniture by Studio Sofield
Powder Room	Total: 3,310 SQF	11' Ceiling Height
		5 Juliet Balconies
		Loggia & Outdoor Kitchen
		Views: South East



Biscayne Bay

Stated dimensions are measured to the exterior boundaries of the exterior walls and the centerline of interior demising walls and in fact vary from the dimensions that would be determined by using the description and definition of the "Unit" set forth in the Declaration (which generally only includes the interior airspace between the perimeter walls and excludes interior structural components). For your reference, the area of the Unit, determined in accordance with those defined unit boundaries, is set forth on Exhibit "3" to the Declaration of Condominium. Note that measurements of rooms set forth on this floor plan are generally taken as the greatest points of each given room (as if the room were a perfect rectangle), without regard for any cutouts. Accordingly, the area of the actual room will typically be smaller than the product obtained by multiplying the stated length times width. All dimensions are approximate and may vary with actual construction, and all floor plans and development plans are subject to change.

888 Residence



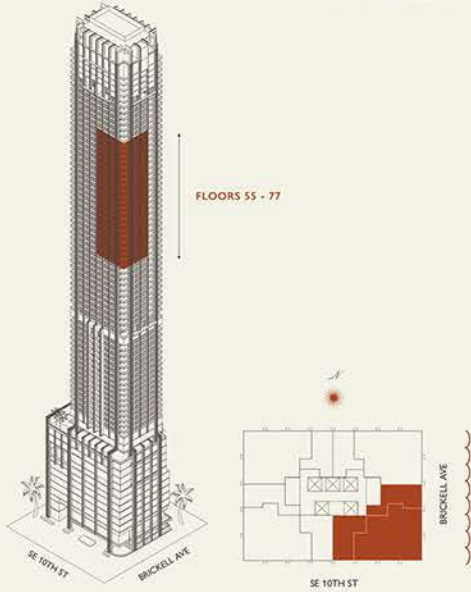
# 888 Brickell Avenue

MIAMI FLORIDA

## Residence A

FLOOR 55-77

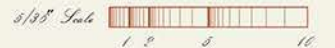
Rooms	Square Footages	Features
3 Bedrooms	Indoor: 2,875 SQF	888 Suite & 888 Rooms
3 Bathrooms	Outdoor: 435 SQF	Furniture by Studio Sofield
Powder Room	Total: 3,310 SQF	11' Ceiling Height
		5 Juliet Balconies
		Loggia & Outdoor Kitchen
		Views: South East



Biscayne Bay

Stated dimensions are measured to the exterior boundaries of the exterior walls and the centerline of interior demising walls and in fact vary from the dimensions that would be determined by using the description and definition of the "Unit" set forth in the Declaration (which generally only includes the interior airspace between the perimeter walls and excludes interior structural components). For your reference, the area of the Unit, determined in accordance with those defined unit boundaries, is set forth on Exhibit "3" to the Declaration of Condominium. Note that measurements of rooms set forth on this floor plan are generally taken as the greatest points of each given room (as if the room were a perfect rectangle), without regard for any cutouts. Accordingly, the area of the actual room will typically be smaller than the product obtained by multiplying the stated length times width. All dimensions are approximate and may vary with actual construction, and all floor plans and development plans are subject to change.

888 Suite



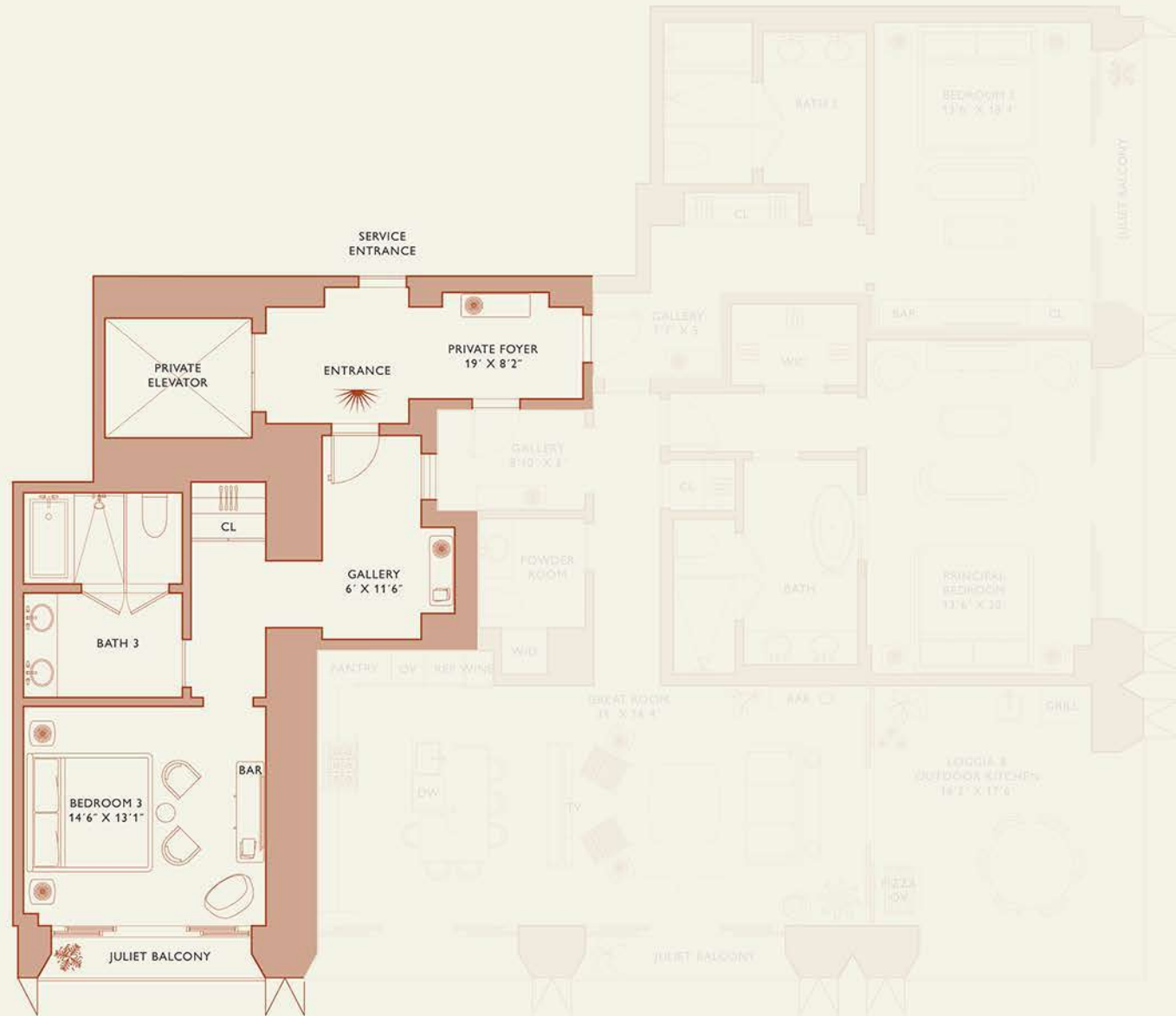
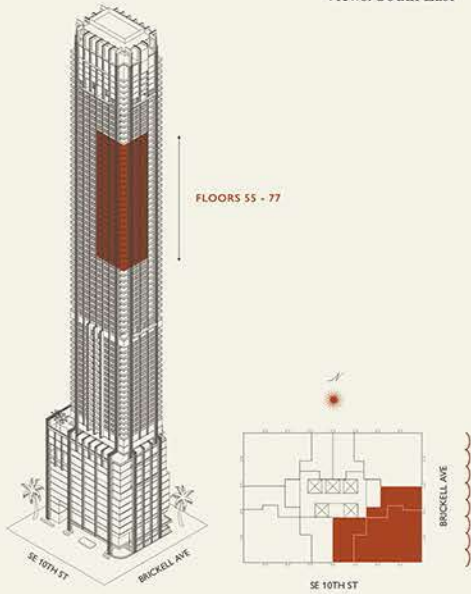
# 888 Brickell Avenue

MIAMI FLORIDA

## Residence A

FLOOR 55-77

Rooms	Square Footages	Features
3 Bedrooms	Indoor: 2,875 SQF	888 Suite & 888 Rooms
3 Bathrooms	Outdoor: 435 SQF	Furniture by Studio Sofield
Powder Room	Total: 3,310 SQF	11' Ceiling Height
		5 Juliet Balconies
		Loggia & Outdoor Kitchen
		Views: South East



*Biscayne Bay*

Stated dimensions are measured to the exterior boundaries of the exterior walls and the centerline of interior demising walls and in fact vary from the dimensions that would be determined by using the description and definition of the "Unit" set forth in the Declaration (which generally only includes the interior airspace between the perimeter walls and excludes interior structural components). For your reference, the area of the Unit, determined in accordance with those defined unit boundaries, is set forth on Exhibit "3" to the Declaration of Condominium. Note that measurements of rooms set forth on this floor plan are generally taken as the greatest points of each given room (as if the room were a perfect rectangle), without regard for any cutouts. Accordingly, the area of the actual room will typically be smaller than the product obtained by multiplying the stated length times width. All dimensions are approximate and may vary with actual construction, and all floor plans and development plans are subject to change.

888 Room 1





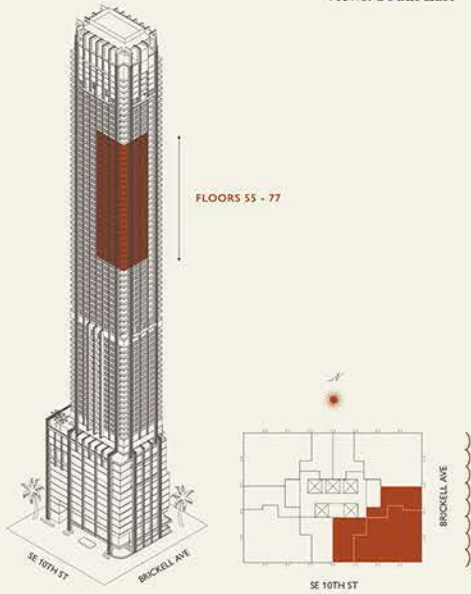
# 888 Brickell Avenue

MIAMI FLORIDA

## Residence A

FLOOR 55-77

Rooms	Square Footages	Features
3 Bedrooms	Indoor: 2,875 SQF	888 Suite & 888 Rooms
3 Bathrooms	Outdoor: 435 SQF	Furniture by Studio Sofield
Powder Room	Total: 3,310 SQF	11' Ceiling Height
		5 Juliet Balconies
		Loggia & Outdoor Kitchen
		Views: South East



*Biscayne Bay*

Stated dimensions are measured to the exterior boundaries of the exterior walls and the centerline of interior demising walls and in fact vary from the dimensions that would be determined by using the description and definition of the "Unit" set forth in the Declaration (which generally only includes the interior airspace between the perimeter walls and excludes interior structural components). For your reference, the area of the Unit, determined in accordance with those defined unit boundaries, is set forth on Exhibit "3" to the Declaration of Condominium. Note that measurements of rooms set forth on this floor plan are generally taken as the greatest points of each given room (as if the room were a perfect rectangle), without regard for any cutouts. Accordingly, the area of the actual room will typically be smaller than the product obtained by multiplying the stated length times width. All dimensions are approximate and may vary with actual construction, and all floor plans and development plans are subject to change.

888 Room 2

