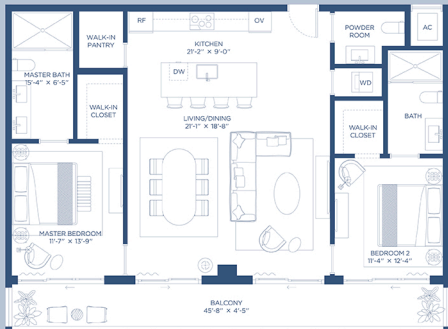


HIGHLIGHTS	INDOOR AREA	OUTDOOR LIVING	TOTAL AREA
<b>2 Bedrooms</b>	<b>1335 ft<sup>2</sup></b>	<b>202 ft<sup>2</sup></b>	<b>1537 ft<sup>2</sup></b>
<b>2 Bathrooms</b>	<b>124 m<sup>2</sup></b>	<b>19 m<sup>2</sup></b>	<b>143 m<sup>2</sup></b>
<b>Powder Room</b>			



Exclusive Sales and Marketing by Douglas Elliman Development Marketing

Noted square footages and dimensions are measured by the exterior boundaries of the exterior walls and the perimeter of interior demising walls and in fact vary from the square footage and dimensions that would be determined by using the description and definition of the "Gross" area for in the Declaration which generally only includes the interior surface between the perimeter walls and excludes all interior structural components and other common elements. This method is generally used in sales materials and is provided to allow a comparative basis to compare the Units with units in other condominium projects that utilize the same method. Measurements of "Gross" area for in the floor plan are generally taken at the farthest points of each space (not at the center) for perfect, but straight, vertical angles for any setbacks or variations. Accordingly, the area of the enclosure will typically be smaller than the product obtained by multiplying the stated length and width. All dimensions are estimates which will vary with actual construction, and all floor plans, specifications and other development plans are subject to change and will not necessarily accurately reflect the final plans and specifications for the development.

