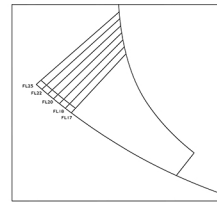
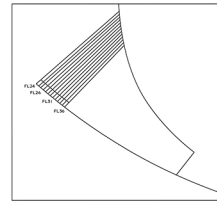
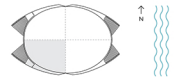


RESIDENCE BENTAYGA
3 BEDS | 3.5 BATHS
 FLOORS 23 , 24

INTERIOR	2,839 SQ. FT.	866 SQ. M.
BALCONY	2,043 SQ. FT.	623 SQ. M.
GARAGE	1,145 SQ. FT.	349 SQ. M.
TOTAL	6,027 SQ. FT.	1,837 SQ. M.



TERRACE AREA VARIES BY FLOOR



ORAL REPRESENTATIONS CANNOT BE RELIED UPON AS CORRECTLY EXPRESSING THE REPRESENTATIONS OF THE DEVELOPER. FOR CORRECT REPRESENTATIONS, MAKE REFERENCE TO THIS BROCHURE AND TO THE DOCUMENTS REQUIRED BY SECTION 718.02, FLORIDA STATUTES, TO BE FURNISHED BY A DEVELOPER TO A BUYER OR LESSEE.

Stated square footages and dimensions are measured to the exterior boundaries of the exterior walls and the perimeter of exterior demurring walls and are fact vary from the square footage and dimensions that would be determined by using the description and definition of the "Gross" and finish in the Declaration (which generally only includes the exterior walls and excludes all interior structural components and other common elements). This method is generally used in sales materials and is provided in order to prospective buyer to compare the Units with units in other condominium projects that utilize the same method. Measurements of rooms set forth on this floor plan are generally taken at the furthest points of such given rooms (as if the room were a perfect rectangle), without regard for any corners or variations. Accordingly, the area of the actual rooms will typically be smaller than the product

obtained by multiplying the stated length and width. All dimensions are estimates which will vary with actual construction, and all floor plans, specifications and other development plans are subject to change and will not necessarily accurately reflect the floor plans and specifications for the developments. All depictions of appliances, fixtures, vanities, toilets, floor coverings and other matters of detail, including, without limitation, items of finish and decoration, are conceptual only and are not necessarily included in each Unit.

