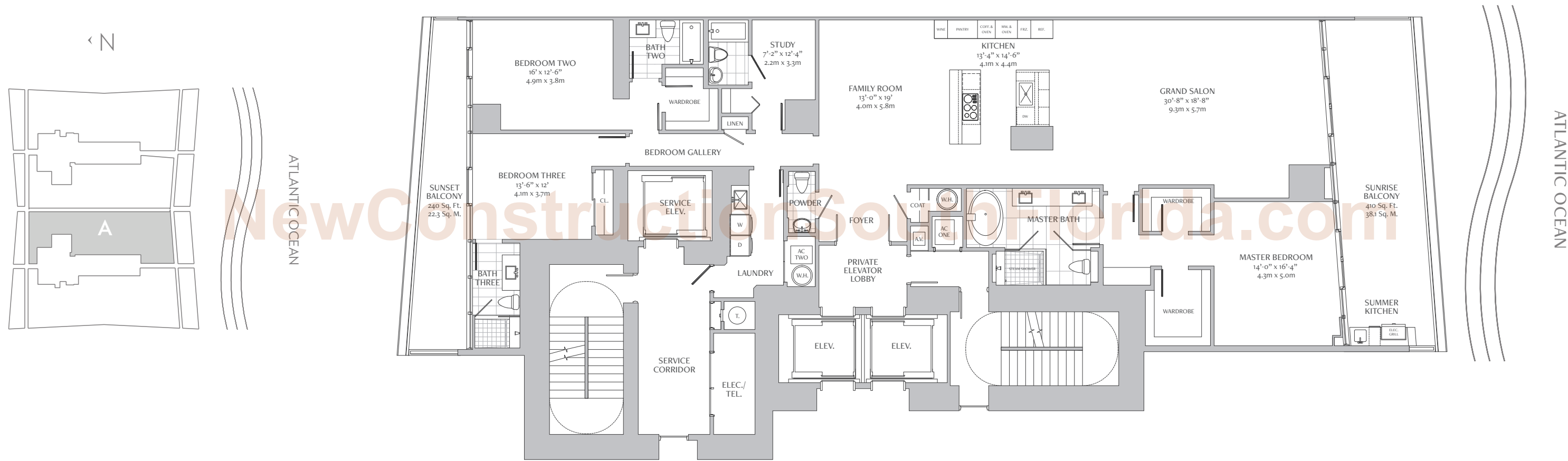


RESIDENCE A

3 BEDROOMS / 4.5 BATH / FAMILY ROOM & STUDY

INDOOR LIVING AREA	3,110 sq ft	288.9 sq m
OUTDOOR LIVING AREA	650 sq ft	60.4 sq m
TOTAL LIVING AREA	3,760 sq ft	349.3 sq m
PAINT -TO-PAINT AREA	2,797 sq ft	259.9 sq m



NewConstructionSouthFlorida.com



SUBJECT TO ARCHITECTURAL AND OTHER REVISIONS AT THE SOLE DISCRETION OF THE DEVELOPER, BUILDER OR ARCHITECT. DIMENSIONS MAY NOT BE TO SCALE. ANY FURNITURE, APPLIANCES OR DECORATOR READY ITEMS DEPICTED HEREIN ARE SHOWN FOR REPRESENTATION ONLY AND ARE NOT INCLUDED IN THE PURCHASE AND SALE OF THE RESIDENCE. STATED DIMENSIONS ARE MEASURED TO THE EXTERIOR FINISH LINE OF THE INTERIOR DEMISING WALLS AND, IN FACT, VARY FROM THE DIMENSIONS THAT WOULD BE DETERMINED BY THE MEASUREMENTS SET FORTH IN THE DECLARATION (WHICH GENERALLY ONLY INCLUDES THE INTERIOR AIRSPACE BETWEEN THE PERIMETER FINISHES). ADDITIONALLY, MEASUREMENTS OF ROOMS SET FORTH ON ANY FLOOR PLAN ARE GENERALLY TAKEN AT THE POINTS OF THE ROOM WERE A PERFECT RECTANGLE, WITHOUT REGARD FOR ANY CUT OUTS. ACCORDINGLY, THE AREA OF THE ACTUAL ROOM WILL VARY FROM THE AREA OBTAINED BY MULTIPLYING THE STATED LENGTH TIMES THE WIDTH. ALL DIMENSIONS ARE APPROXIMATE AND ALL FLOOR PLANS ARE FOR REPRESENTATION ONLY. ORAL REPRESENTATIONS CANNOT BE RELIED UPON TO CORRECTLY STATE THE REPRESENTATIONS OF THE DEVELOPER. ALL DIMENSIONS ARE APPROXIMATE AND ALL FLOOR PLANS ARE FOR REPRESENTATION ONLY. FEDERAL FAIR HOUSING ACT OF 1998. FOR CORRECT REPRESENTATIONS, MAKE REFERENCE TO THE DOCUMENTS REQUIRED BY THE DEVELOPER TO A BUYER OR LESSEE. OBTAIN THE PROPERTY REPORT REQUIRED BY FEDERAL LAW AND READ IT CAREFULLY. CONTRACT TO SELL, OR SOLICITATION OF OFFERS TO BUY THE CONDOMINIUM UNITS WHERE PROHIBITED BY STATE LAW.